

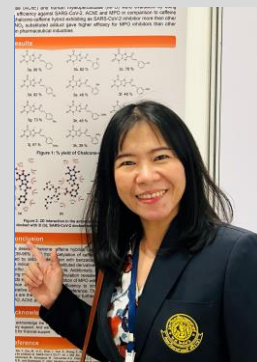
Education

ผศ.ดร.นภัสวรรณ ชำนาญเวช

Asst.Prof.Napasawan Chumnanvej

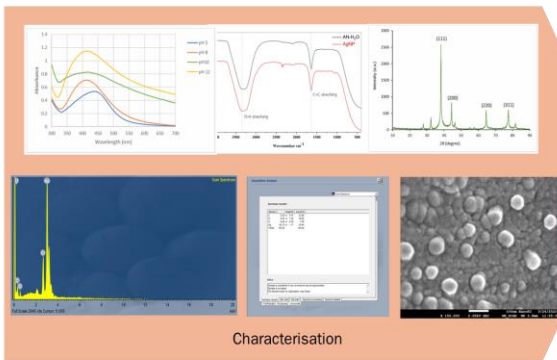
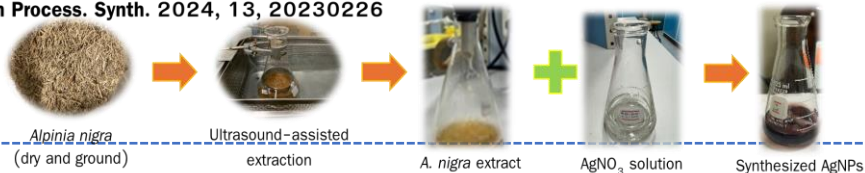
E-mail: [srcnwh@ku.ac.th](mailto:srcnwh@ku.ac.th), [napasawan.h@ku.th](mailto:napasawan.h@ku.th)

- Ph.D. (Chemistry), มหาวิทยาลัยมหิดล, ไทย, 2560
- M.Sc. (Organic Chemistry), มหาวิทยาลัยเกษตรศาสตร์, ไทย, 2544
- B.Sc. (Chemistry), มหาวิทยาลัยธรรมศาสตร์, ไทย, 2540



## Research

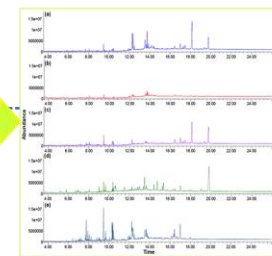
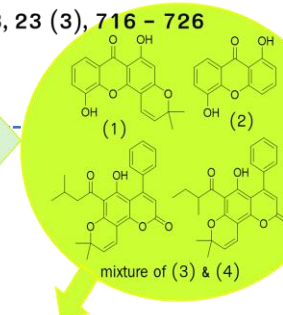
### Green Process. Synth. 2024, 13, 20230226



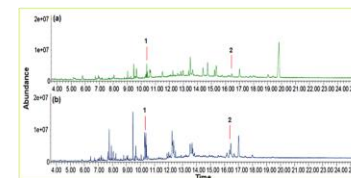
### Indones. J. Chem., 2023, 23 (3), 716 – 726



Extraction & Isolation



Sample	IC <sub>50</sub> (µg/mL)		IC <sub>50</sub> (µg/mL)
	DPPH assay	ABTS assay	
Bark extract	55.11 ± 2.18	103.69 ± 1.21	>100
Flower extract	50.38 ± 2.90	69.58 ± 0.88	70.14 ± 0.79
Twig extract	53.91 ± 0.55	76.67 ± 1.23	76.59 ± 1.27
Leaf extract	66.31 ± 1.24	47.71 ± 0.67	8.37 ± 1.22
Young leaf extract	59.04 ± 1.92	47.22 ± 1.09	93.11 ± 1.37
1	78.16 ± 1.32	40.42 ± 0.59	>100
2	70.16 ± 0.97	38.86 ± 1.66	>100
Quercetin	14.02 ± 0.86	14.02 ± 0.86	ND
BHT	ND	23.23 ± 1.50	ND
K <sub>2</sub> Cr <sub>2</sub> O <sub>7</sub>	ND	ND	12.62 ± 0.72



### In process of publication

